



*Der Getreide-Fulliner*

# Cereal conveying

Elevators, chain and trough conveyors



NEUERO manufactures conveying technology up to a capacity of 259 t / h. High quality materials, a well-thought-out design and precise machining ensure quality and long service life of the machines and equipment components. The materials are galvanised and thus intensively protected against corrosion.

The NK 20 and NK 40 chain elevators have waterproof, galvanised top and bottom parts and are suitable for outdoor usage for inclined conveying up to 45 degrees. The NBEL generation of bucket elevators are also suitable for outdoor usage.

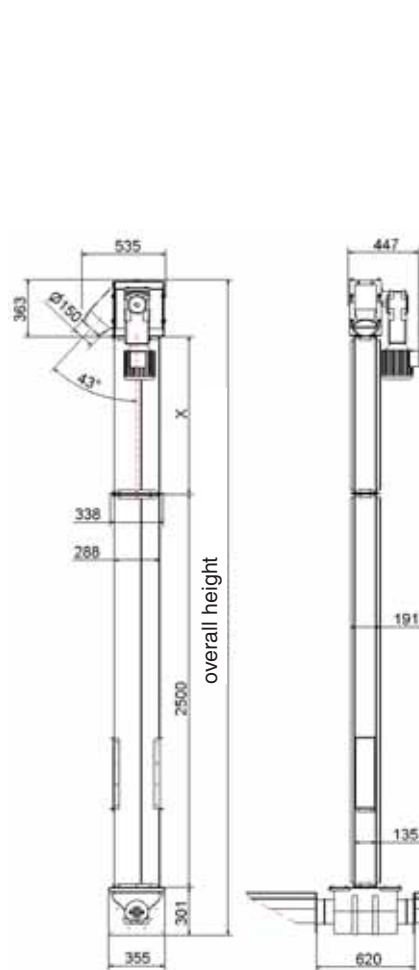
Maintenance-free, splashproof gear motors drive the elevators. Numerous equipment options and the comprehensive range of accessories make NEUERO Fördertechnik a safe and economic investment.



## The special features of NEUERO products are:

- ◆ easy maintenance and installation
- ◆ Use of high quality, galvanised materials
- ◆ machining of the materials with the most modern CNC and laser technology
- ◆ Use of IP 54 gear motors for the elevators and chain conveyors.
- ◆ efficiency and cost effectiveness combined with powerful service
- ◆ high passing accuracy and stability

## Chain elevators Type NK 20



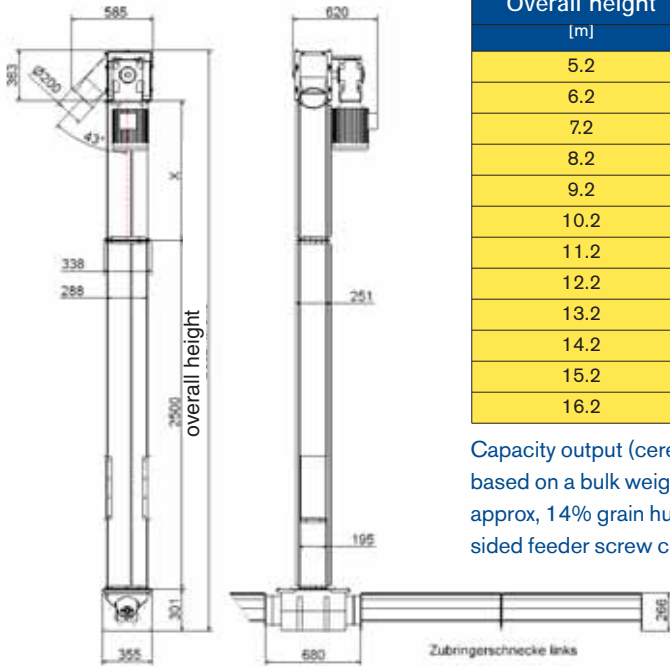
Overall height [m]	Motor [kW]
3.2	3.0
3.7	3.0
4.2	3.0
4.7	3.0
5.2	3.0
5.7	3.0
6.2	3.0
6.7	3.0
7.2	3.0
7.7	3.0
8.2	3.0
8.7	3.0
9.2	4.0
9.7	4.0
10.2	4.0
10.7	4.0
11.2	4.0
11.7	4.0
12.2	4.0
12.7	4.0
13.2	4.0
13.7	4.0
14.2	4.0
14.7	4.0
15.2	4.0

Galvanised guide boxes and feed screw conveyors	
Wing feeders right (Z 180 with spacer)	
Wing feeders left (Z 180 with spacer)	
Coupling with right wing (Z 180 with spacer)	
Coupling with left wing (Z 180 with spacer)	
Feeder screw conveyor right, 0.5 m long	
Feeder screw conveyor right, 1.0 m long	
Feeder screw conveyor right, 2.0 m long	
Feeder screw conveyor right, 2.5 m long	
Feeder screw conveyor left, 0.5 m long	
Feeder screw conveyor left, 1.0 m long	
Feeder screw conveyor left, 2.0 m long	
Feeder screw conveyor left, 2.5 m long	
Spacer for Z 180	
Spacer plate with bearing and pivot to the feeder screw conveyor	

- Z 130**  
Single-sided feeder screw conveyor: 20.000 kg/h
- Z 135. S65**  
Double-sided feeder screw conveyor: 20.000 kg/h

Capacity output (cereal) for a bulk weight of 750 kg/m<sup>3</sup> and approx, 14% grain humidity.

# Chain elevators Type NK 40



Overall height [m]	Motor [kW]
5.2	5.5
6.2	5.5
7.2	5.5
8.2	5.5
9.2	5.5
10.2	5.5
11.2	5.5
12.2	5.5
13.2	7.5
14.2	7.5
15.2	7.5
16.2	7.5

Capacity output (cereal) up to 40.000 kg/h based on a bulk weight of 750 kg/m<sup>3</sup> and approx. 14% grain humidity, with double-sided feeder screw conveyor:

Galvanised guide boxes and feeder screws	
Wing feeders right (Z 180 with spacer)	
Wing feeders left (Z 180 with spacer)	
Coupling with right wing (Z 180 with spacer)	
Coupling with left wing (Z 180 with spacer)	
Feeder screw right.	0.5 m long
Feeder screw right.	1.0 m long
Feeder screw right.	2.0 m long
Feeder screw right.	2.5 m long
Feeder screw left.	0.5 m long
Feeder screw left.	1.0 m long
Feeder screw left.	2.0 m long
Feeder screw left.	2.5 m long
Spacer for Z 180	
Spacer plate with bearing and pivot to the feeder screw conveyor	

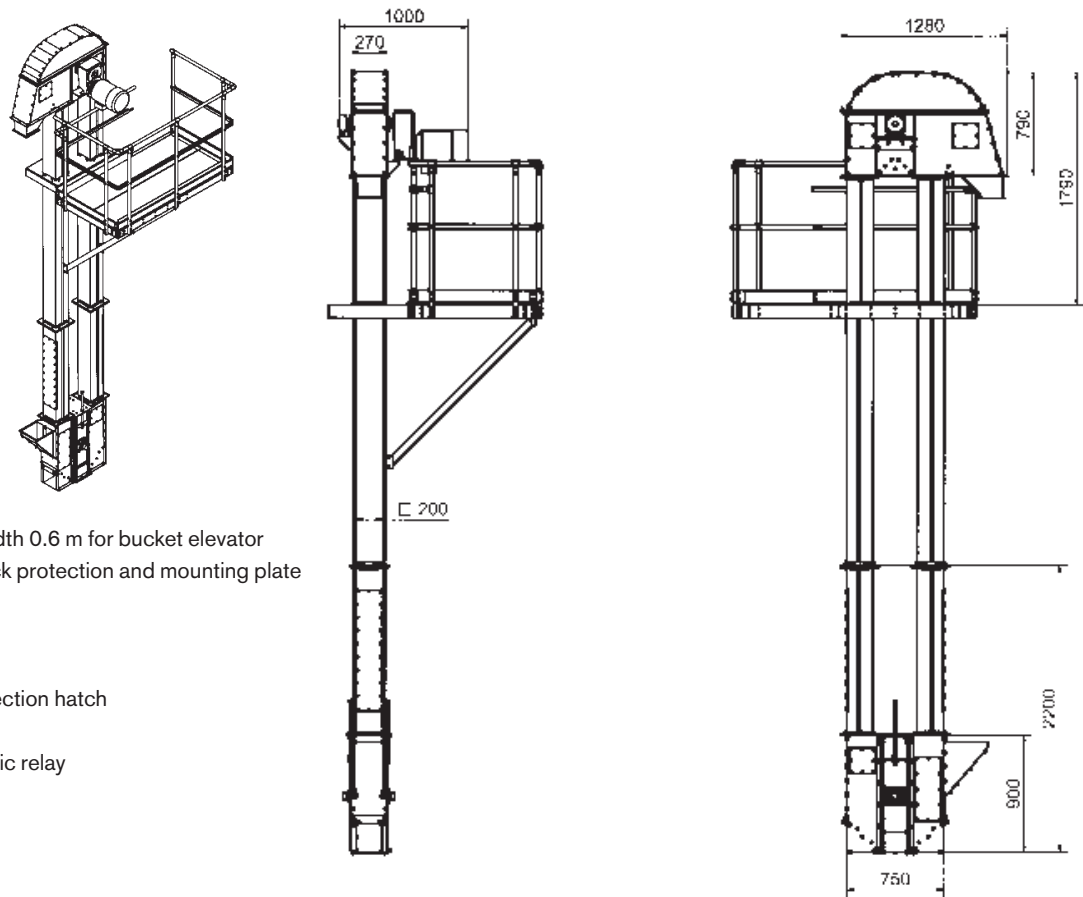
## separate drive for feeder screw

Antrieb Z	135	3.0 kW	motor including console and coupling, 20 t/h, until length to 6 m
Antrieb Z	135	4.0 kW	motor including console and coupling, 20 t/h, length 6 m
Antrieb Z	180	4.0 kW	motor including console and coupling, 40 t/h, until length 6 m
Antrieb Z	180	5.5 kW	motor including console and coupling, 40 t/h, length 6 m

# Bucket elevators Type NBEL 25-40-60

galvanised

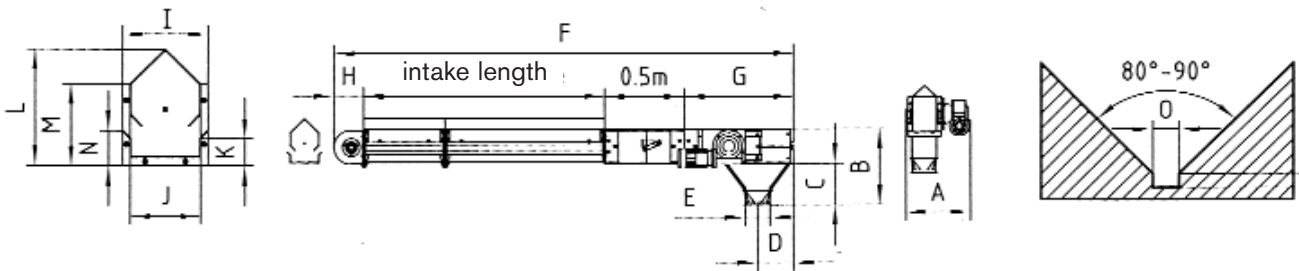
Typ Output* Belt speed		NBEL Elevator 25 up to 25 t/h 3.7 m/sec Motor [kW]	NBEL Elevator 40 up to 40 t/h 3.7 m/sec Motor [kW]	NBEL Elevator 60 up to 60 t/h 3.7 m/sec Motor [kW]
height [m]	extension			
5	3	1.5	2.2	4.0
6	4	1.5	2.2	4.0
7	5	1.5	3.0	4.0
8	6	1.5	3.0	4.0
9	7	1.5	3.0	4.0
10	8	2.2	3.0	4.0
11	9	2.2	3.0	5.5
12	10	2.2	3.0	5.5
13	11	2.2	4.0	5.5
14	12	2.2	4.0	5.5
15	13	2.2	4.0	5.5
16	14	3.0	4.0	5.5
17	15	3.0	4.0	7.5
18	16	3.0	4.0	7.5
19	17	3.0	5.5	7.5
20	18	3.0	5.5	7.5
21	19	3.0	5.5	7.5
22	20	3.0	5.5	7.5
23	21	3.0	5.5	7.5
24	22	3.0	5.5	7.5
25	23	3.0	5.5	7.5



## Accessories

- ◆ Elevator platform 2.0x2.0 m, width 0.6 m for bucket elevator
- ◆ Ladder section 2.50 m with back protection and mounting plate
- ◆ Inlet piece 90° Ø 200
- ◆ Inlet piece 45° Ø 200
- ◆ Inlet regulation
- ◆ Extension tube 1.3 m with inspection hatch
- ◆ Connecting plate
- ◆ Speed monitoring with electronic relay

## Receiving trough chain conveyor Type NR



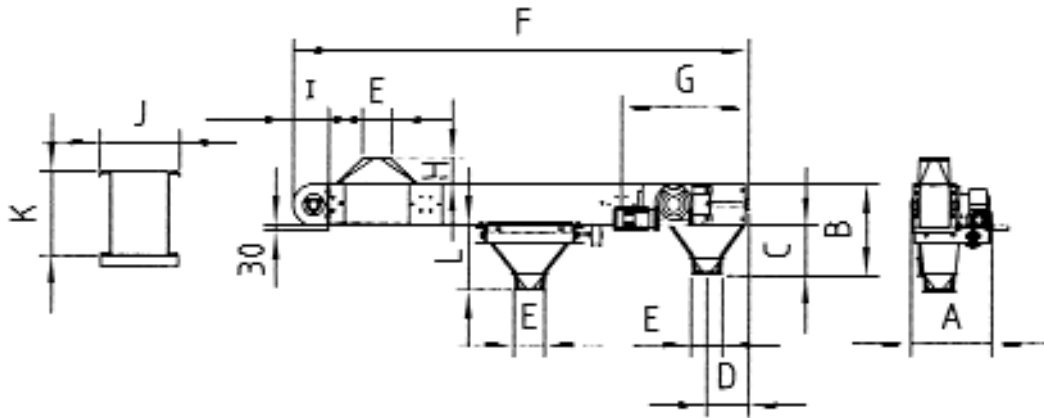
Type	NR 25	NR 40	NR 60	Motor
Output*	up to 25t/h	up to 40t/h	up to 60t/h	[kW]
Overall length [m]	intake length [m]	Motor [kW]	intake length [m]	
3.85	2.5	1.5	2.5	2.2
4.85	3.5	1.5	3.5	2.2
5.85	4.5	1.5	4.5	2.2
6.85	5.5	1.5	5.5	2.2
7.85	6.5	2.2	6.5	2.2
8.85	7.5	2.2	7.5	3.0
9.85	8.5	2.2	8.5	3.0
10.85	9.5	2.2	9.5	4.0
11.85	10.5	2.2	10.5	4.0
12.85	11.5	3.0	11.5	5.5

## Accessories

- ◆ Intake section, without chain. 1.5 m long
- ◆ Microswitch for safety cutout
- ◆ Intake section, without chain floor. 2.0 m long
- ◆ Side inlet
- ◆ Intake section, without chain floor. 2.5 m long
- ◆ End outlet Ø 200. 600 mm long
- ◆ Chain conveyor (length = overall length x 2 + 0.5 m)
- ◆ End outlet Ø 250, 600 mm long
- ◆ Scraper complete, clearance 25 mm
- ◆ Inspection window in drive station



# Chain conveyor Type NR



Type	Conveyor length	NR 25	NR 40	NR 60	Motor
Output*	[m]	up to 25 t/h	up to 40 t/h	up to 60 t/h	[kW]
Overall length [m]		Motor [kW]	Motor [kW]	Conveyor length	
5.85	5.0	1.1	1.1	5.0	2.2
6.85	6.0	1.1	1.1	6.0	2.2
7.85	7.0	1.1	1.1	7.0	2.2
8.85	8.0	1.1	1.5	8.0	2.2
9.85	9.0	1.1	1.5	9.0	2.2
10.85	10.0	1.1	1.5	10.0	2.2
11.85	11.0	1.1	2.2	11.0	2.2
12.85	12.0	1.1	2.2	12.0	3.0
13.85	13.0	1.1	2.2	13.0	3.0
14.85	14.0	1.1	2.2	14.0	3.0
15.85	15.0	1.5	2.2	15.0	3.0
16.85	16.0	1.5	2.2	16.0	3.0
17.85	17.0	1.5	2.2	17.0	3.0
18.85	18.0	1.5	2.2	18.0	4.0
19.85	19.0	1.5	2.2	19.0	4.0
20.85	20.0	2.2	3.0	20.0	4.0
21.85	21.0	2.2	3.0	21.0	4.0
22.85	22.0	2.2	3.0	22.0	4.0
23.85	23.0	2.2	3.0	23.0	4.0
24.85	24.0	2.2	3.0	24.0	4.0
25.85	25.0	3.0	4.0	25.0	4.0
26.85	26.0	3.0	4.0	26.0	4.0
27.85	27.0	3.0	4.0	27.0	5.5
28.85	28.0	3.0	4.0	28.0	5.5
29.85	29.0	3.0	4.0	29.0	5.5
30.85	30.0	3.0	4.0	30.0	5.5

## Accessories

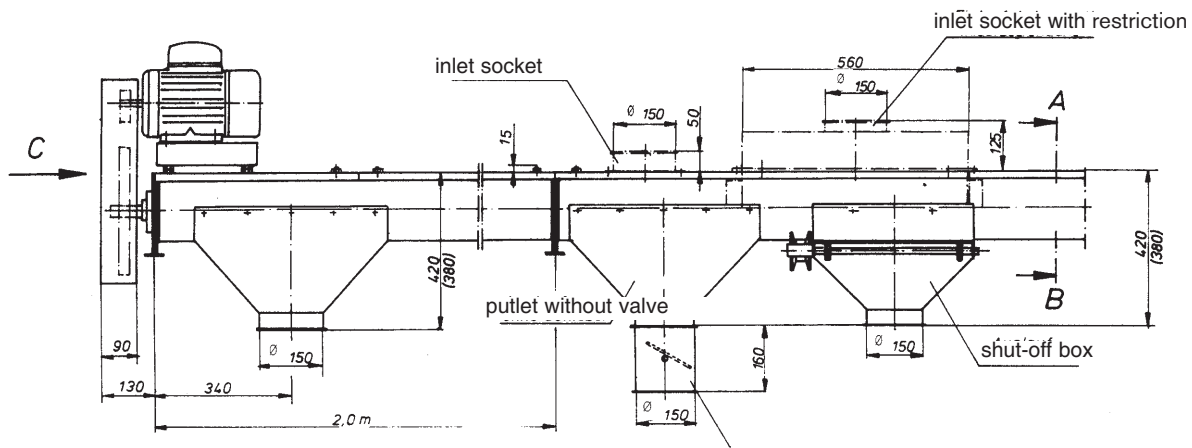
- ◆ Extension 0.5 m long, including chain
- ◆ Extension 1.0 m long, including chain
- ◆ Extension 2.0 m long, including chain
- ◆ Outlet manually operated, with cone Ø 150/200
- ◆ Outlet: remote controlled, with cone Ø 150/200, however without operating cable
- ◆ Outlet: motor operated, with cone Ø 150/200
- ◆ Brush for outlet
- ◆ Inlet Ø 150 or Ø 200
- ◆ Side inlet Ø 150 or Ø 200
- ◆ End outlet Ø 150 or Ø 200
- ◆ Microswitch with console (overrun switch)

	A	B	C	D	E	F	G	H	I	J	K	L
NR 25	415	480	260	345	Ø 150	856 + extension	672	135	184	210	220	370
NR 40	525	565	290	420	Ø 200	882 + extension	672	135	210	320	275	380

- ◆ Reversible chain conveyor NR 25 with the same motor output – maximum length 30 m
- ◆ Reversible chain conveyor NR 40 with the same motor output – maximum length 25 m
- ◆ Chain conveyor for longer lengths on request.
- ◆ Special equipment is required for usage with seeds.
- ◆ Plastic floor, optimal as wear protection

Motor Type	NR 25 until m	NR 40 until m
0.75 kW	5	–
1.1 kW	14	7
1.5 kW	19	10
2.2 kW	24	19
3.0 kW	30	24
4.0 kW	–	30
5.5 kW	–	–

# Trough screw conveyor Type TS 1702 and TS 2003

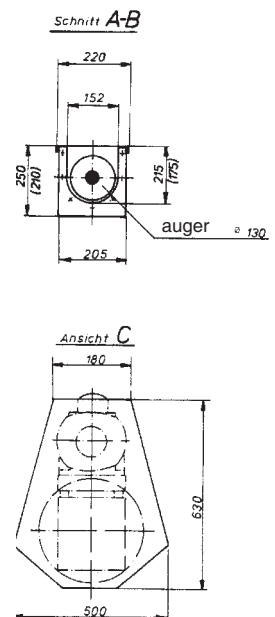


TS 1702: Conveyor capacity up to 17.000 kg

TS 2003: Conveyor capacity up to 20.000 kg

based on bulk weight of 750 kg/m<sup>3</sup>, horizontal conveying and approx. 14% grain humidity.

Overall length [m]	Motor [kW]	Overall length [m]	Motor [kW]	Overall length [m]	Motor [kW]
3.5	1.5	13.0	3.0	22.0	4.0
4.0	1.5	13.5	3.0	22.5	4.0
5.0	1.5	14.0	3.0	23.0	4.0
5.5	1.5	14.5	3.0	23.5	4.0
6.0	1.5	15.0	3.0	24.0	4.0
6.5	1.5	15.5	3.0	24.5	4.0
7.0	1.5	16.0	3.0	25.0	5.5
7.5	1.5	16.5	3.0	25.5	5.5
8.0	1.5	17.0	3.0	26.0	5.5
8.5	1.5	17.5	3.0	26.5	5.5
9.0	1.5	18.0	3.0	27.0	5.5
9.5	2.2	18.5	3.0	27.5	5.5
10.0	2.2	19.0	3.0	28.0	5.5
10.5	2.2	19.5	3.0	28.5	5.5
11.0	2.2	20.0	3.0	29.0	5.5
11.5	2.2	20.5	4.0	29.5	5.5
12.0	2.2	21.0	4.0	30.0	5.5
12.5	3.0	21.5	4.0		

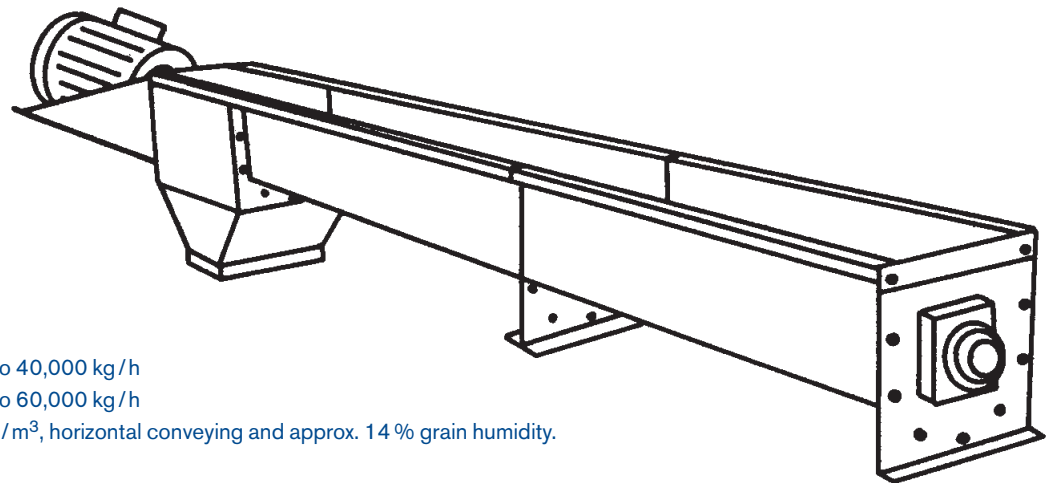


## Accessories

- ◆ Inlet hopper. round with finger guard
- ◆ Intermediate outlet with slider for remote operation
- ◆ Tension ring 150 with screw connection and seal
- ◆ Extension 1.5 m or 2.0 m with cover and intermediate bearing for TS 1702/2003
- ◆ Inlet socket Ø 150 for TS 2003
- ◆ Extension 1.5 m with cover and intermediate bearing for TS 1702/2003
- ◆ Inlet socket Ø 150 for TS 1702
- ◆ Extension 1.5 m or 2.0 m with cover and intermediate bearing for TS 2003
- ◆ Inlet nozzle Ø 150 with inlet restriction
- ◆ Inlet Ø 150 long for mealy products
- ◆ Side-mounted motor
- ◆ Intermediate outlet without slider
- ◆ Sliding usage version
- ◆ Shut-off box Ø 150. painted. for tension ring connection
- ◆ Motor from 5.5 kW to 7.5 kW
- ◆ Intermediate outlet with valve. motor-operated
- ◆ Gear motor

# Trough conveyor Type TS 4000 and TS 6000

with gear motor

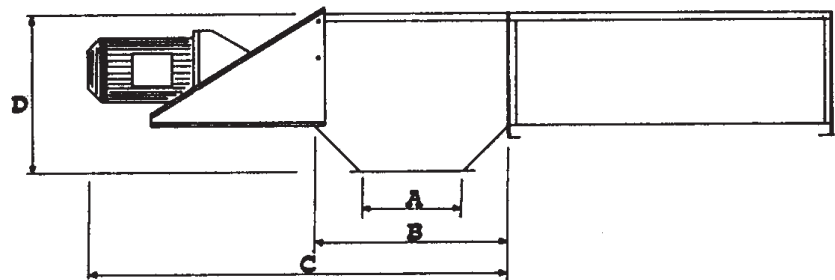


TS 4000: Conveyor capacity up to 40,000 kg/h

TS 6000: Conveyor capacity up to 60,000 kg/h

based on a bulk weight of 750 kg/m<sup>3</sup>, horizontal conveying and approx. 14% grain humidity.

Trough length [m]	TS 4000 Motor [kW]	TS 6000 Motor [kW]
4.0	1.5	2.2
5.0	1.5	2.2
6.0	2.2	3.0
7.0	2.2	3.0
8.0	2.2	4.0
9.0	3.0	4.0
10.0	3.0	4.0
11.0	3.0	5.5
12.0	4.0	5.5
13.0	4.0	5.5
14.0	4.0	7.5
15.0	4.0	7.5
16.0	5.5	7.5
17.0	5.5	7.5
18.0	5.5	7.5
19.0	5.5	9.2
20.0	5.5	9.2
21.0	7.5	9.2
22.0	7.5	9.2
23.0	7.5	11.0
24.0	7.5	11.0
25.0	7.5	11.0
26.0	7.5	11.0
27.0	7.5	11.0
28.0	9.2	-
29.0	9.2	-
30.0	9.2	-
31.0	9.2	-
32.0	9.2	-



## Accessories

- ◆ Inlet cover Ø 200 for tension ring connection
- ◆ Inlet Ø 200 long for mealy products
- ◆ Intermediate outlet for TS 6000 with manual slider and changeover square 300 x 300 mm
- ◆ Electric valve with outlet
- ◆ Adapter, square, from 250 to Ø 200 tension ring connection
- ◆ Extension 1.0 m - 3.0 m long with cover, galvanised
- ◆ Intermediate bearing with bushing
- ◆ Intermediate outlet with slider for remote operation
- ◆ Adapter square 300 x 300 to Ø 250 tension ring connection (inlet and outlet)
- ◆ Extension 1.5 m - 3 m long with cover including intermediate outlet

	TS 4000	TS 6000
A square	250 mm	300 mm
B	500 mm	500 mm
C	680 – 1115 mm	700 – 1200 mm
D	785 mm	533 mm
N	60 mm	70 mm
O	230 mm	280 mm
P	230 mm	280 mm
Q	333 mm	393 mm
R	337 mm	400 mm



# Cereal storage silos for indoor and outside installation



- ◆ with statics
- ◆ galvanised
- ◆ solid construction
- ◆ high production quality
- ◆ flat profiling of the silo plates gives stability and is better suited for cultivation products. e.g. seeds
- ◆ customized aeration systems and aeration fans
- ◆ control of the stored product using NEUERO temperature measurement equipment
- ◆ cereal storage silos ob hopper construction in segment construction
- ◆ and many other advantages are provided by NEUERO farm technology

**NEUERO provides you with everything for cereals:**  
 storage ◆ cleaning ◆ drying  
 cooling ◆ ventilation ◆ milling

Your NEUERO dealer:



**NEUERO Farm- und Fördertechnik GmbH**  
 Alter Handelsweg 11 · 49328 Melle  
 Tel. +49 5427 9270-0 · Fax +49 5427 9270-140  
 info@neuero-farm.de · [www.neuero-farm.de](http://www.neuero-farm.de)

*Der Getreide-Fülliner*