



Manufacturers of High-Quality Farm Machinery

# PARTS CATALOGUE



## ***Xcel 1250***

**Hi-Spec Engineering Ltd.**

Station Rd., Bagenalstown, Co. Carlow.

**Tel.** +353 (0) 59 -9721929 / 9721992

**Fax.** +353 (0) 59 -9721980

**Website:** [www.hispec.net](http://www.hispec.net)

**E-mail:** [sales@hispec.net](mailto:sales@hispec.net)

Parts are subject to change at any time, without prior or direct notice to the customer. The contents of this manual can as well be changed without prior notice. For information about parts, which are not mentioned in this manual, you are advised to consult the technical support of your supplier.

This manual has been made with all possible effort, but Hi-Spec Engineering and its suppliers cannot be responsible for possible mistakes in this manual, nor for the consequences.

## *Hi-Spec Xcel 1250*

Layout of the Xcel 1250	3
Floor Chain System	4
Hydraulic Fittings & Attachments	5
Rotor Drive System	7
Rotor and Rear Spreading Spinners	8
Gearboxes & PTO Drive	9
- Floor chain drive gearbox	10
- Rear spreading spinners gearbox	11
Fittings	12
Wheel & Tyre Assembly	13
PTO Shafts	14
Axle	15

### ***When ordering parts:***

- Quote Machine Serial Number and Model.
- Quote the complete Part Number and Description.
- State the means by which you require delivery, whether by C.O.D post or delivery through our dealer network.
- Where reference is made to Left and Right, this should be understood to mean left or right when the machine is viewed from the rear.



### **Safety First:**

Use only genuine Hi-Spec spare parts for this machine. Use of spare parts not supplied or recommended by Hi-Spec could result in injury to the operator or damage to the machine, and invalidate the warranty.

### **NOTE:**

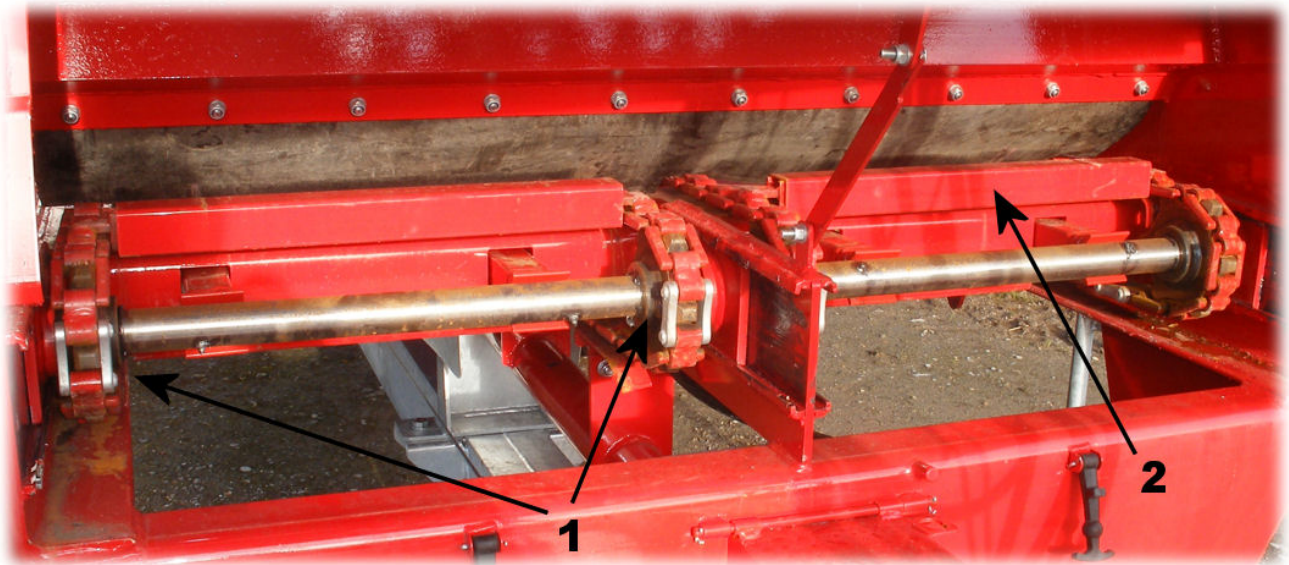
- The illustrations in this book are for identification purposes only.
- Hi-Spec Engineering reserves the right to make changes or improvements at any time without incurring any obligation to make such changes on products sold previously.

## *Layout of the Xcel 1250*

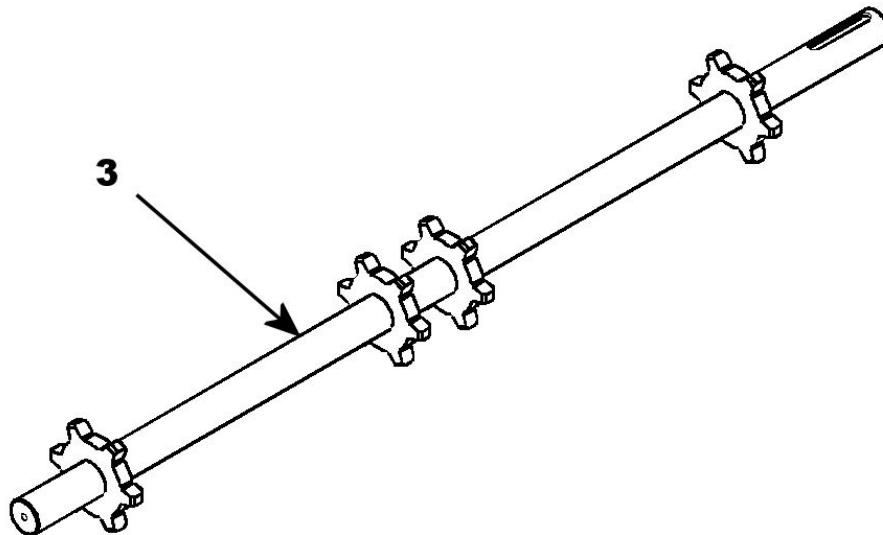


Reference	Description	Part No.
1	Ring hitch	MM/9207
2	Drawbar stand	
3	Drawbar	
4	Ladder	
5	Spill guard	
6	Slurry door	
7	Hard-Ox rotor cover	
8	Rotor drive system cover	

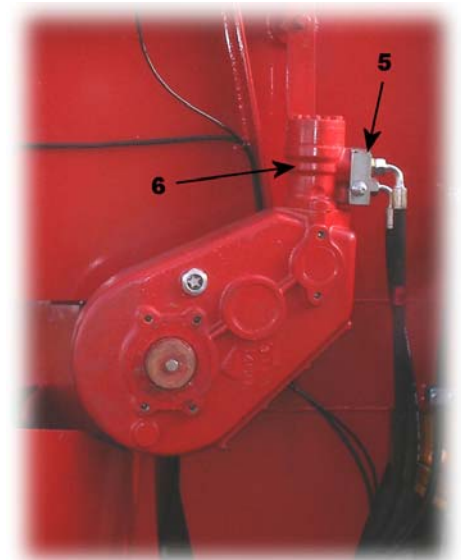
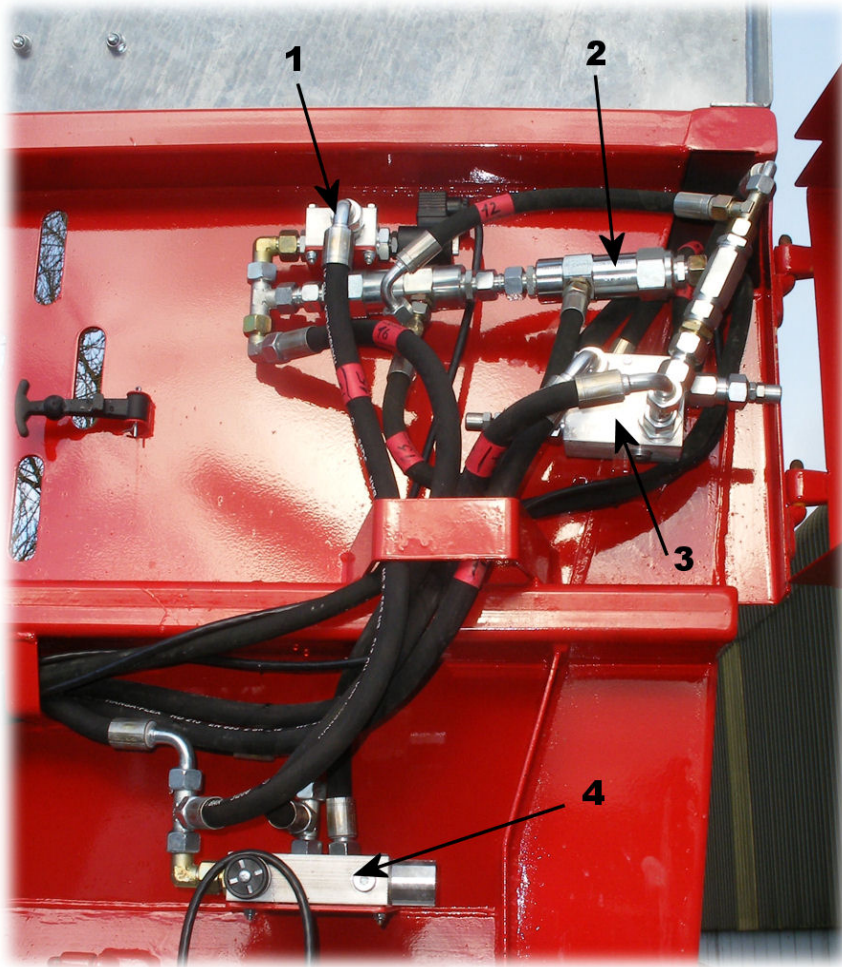
## Floor Chain System



	Part No.	Description
<b>1</b>	DS/0012	Front floor chain sprockets
<b>2</b>	DS/0036	Floor cross section box
<b>3</b>	DS/0037	Floor chain drive shaft complete
	DS/0010	Floor chain joiner link
	DS/0013	Hydraulic chain tensioner ram



## *Hydraulic Fittings & Attachments*

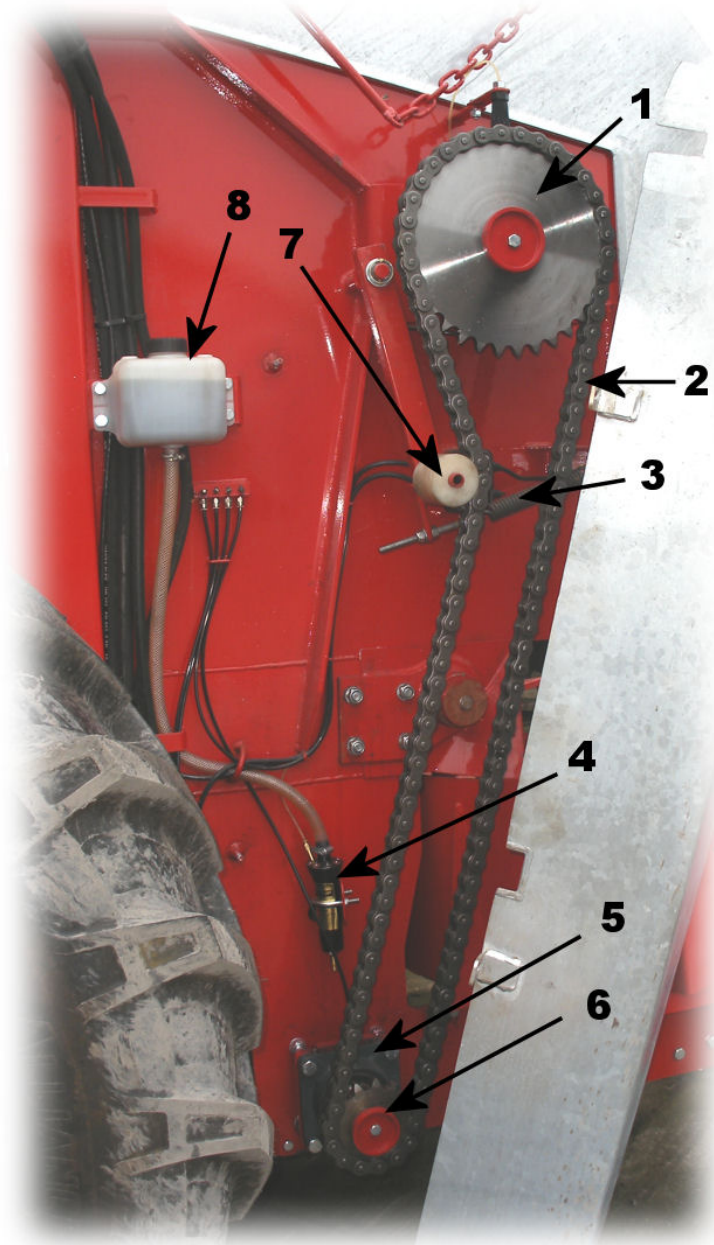


	Part No.	Description
<b>1</b>	DS/0017	12 volt Solenoid Valve
<b>2</b>		Pilot Check Valve
<b>3</b>		Slurry door Crossline relief valve
<b>4</b>	DS/0014	Floor speed flow control
<b>5</b>	DS/0015	Floor drive Crossline relief valve
<b>6</b>	DS/0024	Floor drive motor

## *Hydraulic Fittings & Attachments*

GP/2000	1/2" Quick release female	
GP/2002	Hydraulic fitting	
MM/H006	3/8" Hose 1/2" Hose	
MM/H007	When ordering hose please state length and end fittings required.	
DS/0039	HS98 Slurry door ram	
DS/0040	HS99 Slurry door ram	

## *Rotor Drive System*



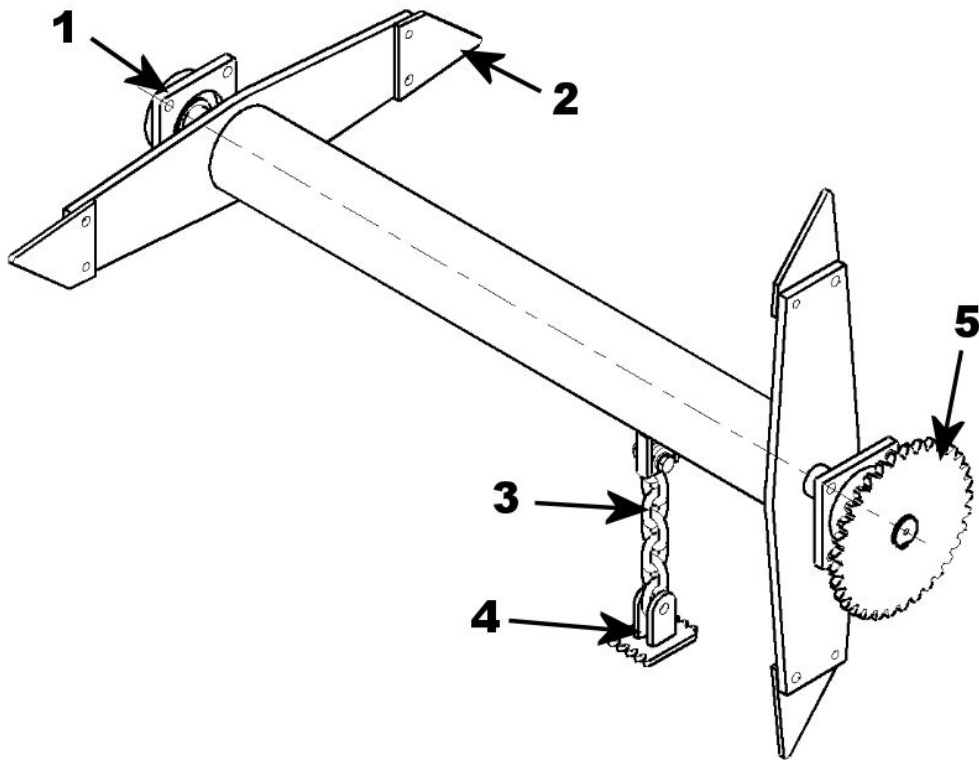
	Part No.	Description
<b>1</b>	SS/806	33 Tooth Sprocket
<b>2</b>	DS/0047 GP/30110	ASA 100H Drive chain ASA 100H Chain joiner link
<b>3</b>	GP/3003	Chain tensioning spring
<b>4</b>		Chain automatic oiler
<b>5</b>	MM/0551	FX11 Bearing complete with pillow block
<b>6</b>	SS/804	11 Tooth Sprocket
<b>7</b>		Chain tensioner
<b>8</b>		Automatic oiler bottle
	DS/0038	Shaft between 11T Sprocket (6) and T-269 gearbox



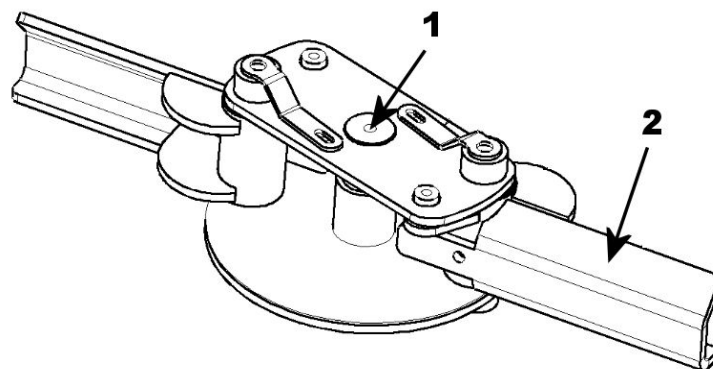
## *Rubbers*

Part No.	Description	Rubber size
	Rear hood rubber	1500 x 300 – 9 hole
	Rubber over front viewing grid	800 x 660 – 16 hole
	Front sealing rubber	1500 x 250 – 9 hole
	Rear sealing rubber (fitted on slurry door)	1500 x 200 – 9 hole
	Rear flap	1500 x 660 – 9 hole

## Rotor & Rear Spreading Spinners



	Part No.	Description
<b>1</b>	MM/0502	UC312 Housing
	MM/0503	UC312 Insert
<b>2</b>		Rotor blade
<b>3</b>		Marine chain
<b>4</b>	DS/0032	Flail head
<b>5</b>	SS/806	33 Tooth Sprocket



	Part No.	Description
<b>1</b>		Complete rear spinner
<b>2</b>	DS/0029	Wear plates

## Gearboxes & PTO Drive

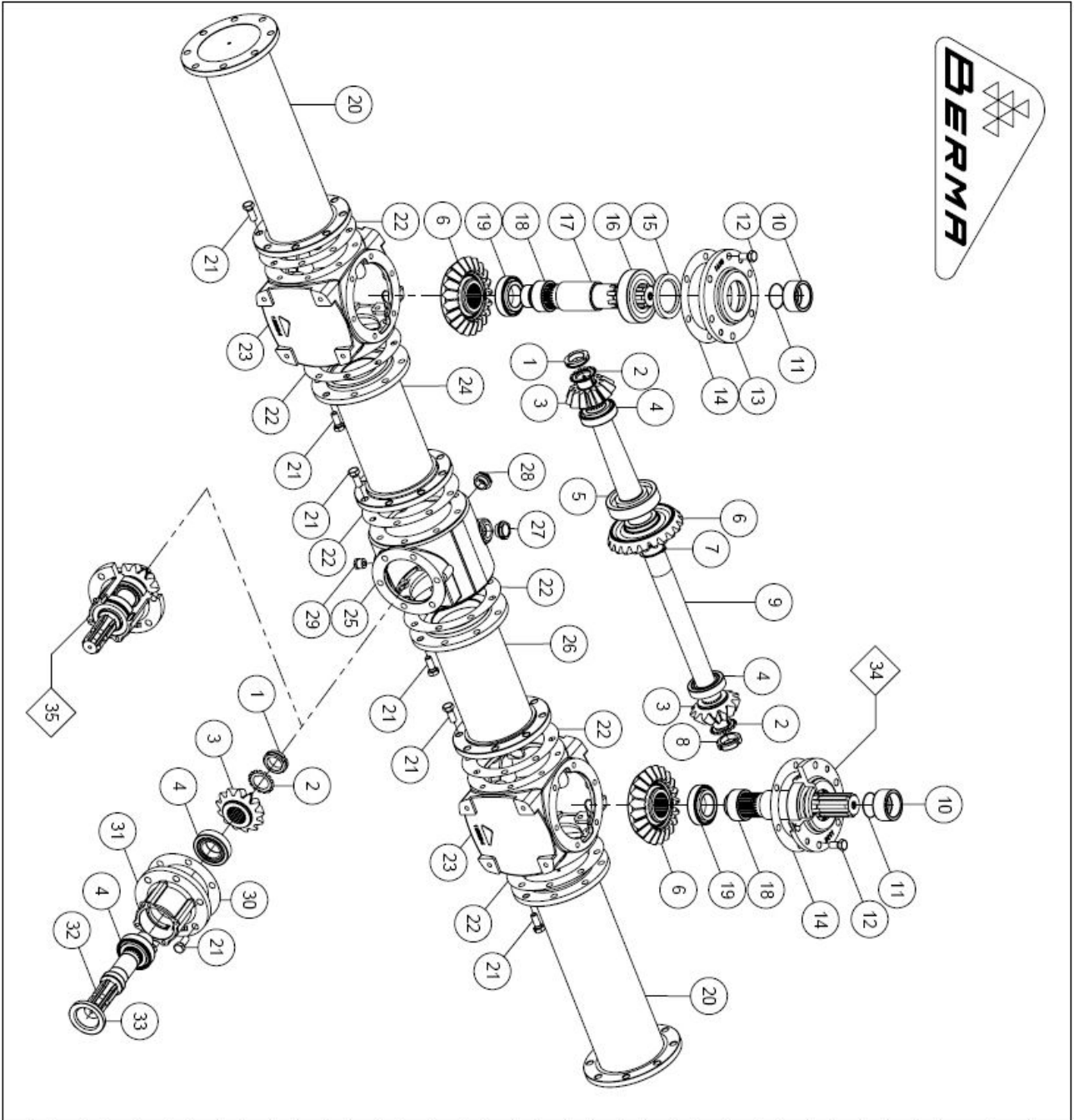


	Part No.	Description
<b>1</b>	DS/005	T80 Driveshaft
<b>2</b>	DS/0027	Double coupling
<b>3</b>	DS/0001	T-269-008 Gearbox
<b>4</b>	DS/0004	Single coupling

# Floor Chain Drive Gearbox

Riduttore RT500 Ø60			
CODICE 9063			
Fig.	Rif.	Descrizione	Qt.
1	8979	Scatola RT500	1
2	8995	Mozzo Ø60	1
3	9066	Seejer E 95	1
4	8996	Ruota dentata Z=54	1
5	9067	Cuscinetto 6017	2
6	9069	Seejer I 130	2
7	9009	Pignone di rinvio Z=12	1
8	4174	Chiavetta 12x8x30	2
9	9007	Ruota dentata Z=63	1
10	10509	Cuscinetto 6208 -MP	2
11	3435	Seejer I 80	3
12	9008	Pignone di rinvio Z=10	1
13	3396	Chiavetta 8x7x25	1
14	8670-2	Corona conica Z=43	1
15	9010	Distanziale x corona	1
16	8596	Cuscinetto 6305	2
17	3433	Seejer I 62	2
18	8670-1	Pignone Z=28	1
19	1538	Cuscinetto 6010	1
20	3428	Seejer E 50	1
21	9175	Tappo sfiato Ø1" Gas	2
22	1831	Spia liv. olio Ø1" Gas	2
23	8625	Tappo Ø62 sp. 10	2
24	8243	Tappo Ø80 sp. 10	2
25	9068	Arnello di ten. 85/130/12	2
26	9064	Guarnizione coperchio	1
27	9065	Coperchio x scatola	1
28	3284	Vite TE M8x16-8G	8
29	8671	Guarnizione x motore	1

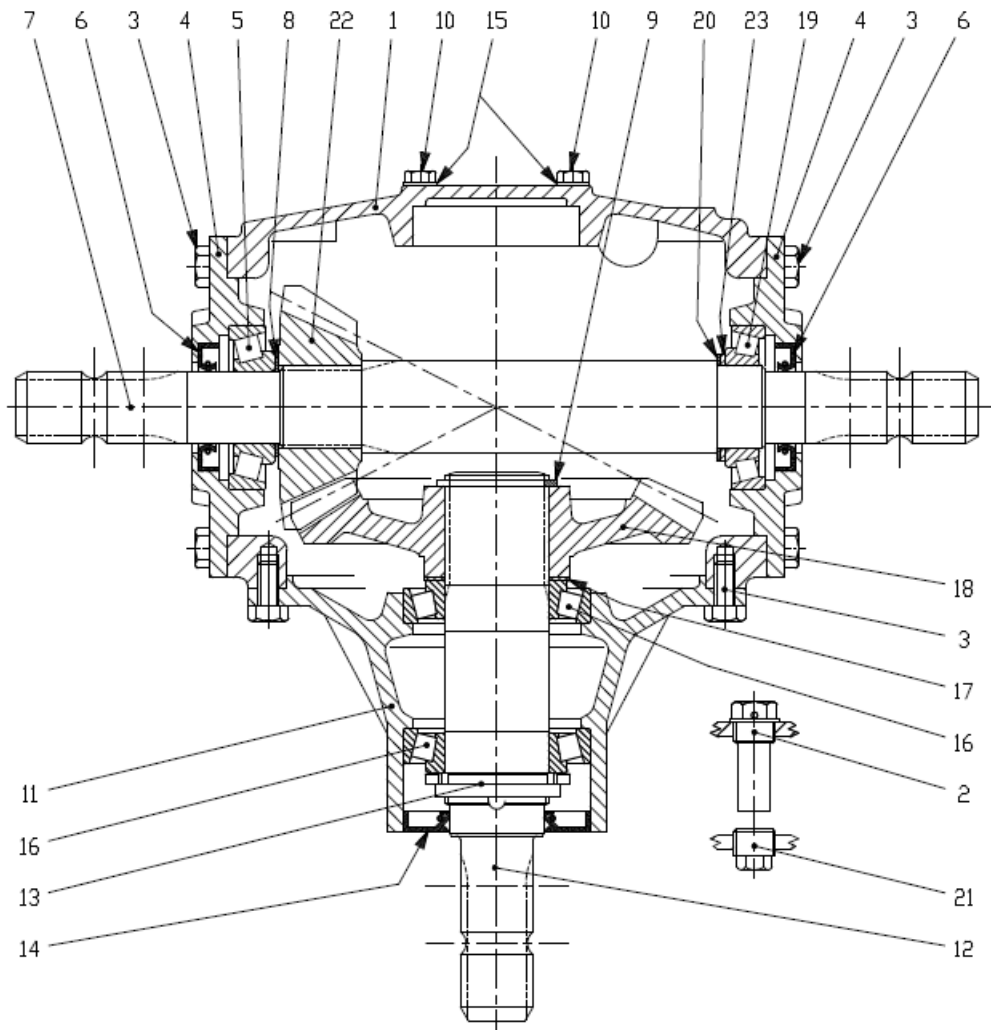
# Rear Spreading Spinners Gearbox



SRT18/2273 - 1000/350			
CODICE 13885			
Fig.	Rif.	Descrizione	Qt.
1	9137	Ghiera M40x1.5 sx.	2
2	9011	Rosetta x ghiera M40	3
3	9051	Pignone conico Z=13	3
4	1259	Cuscinetto 32209	4
5	1531	Cuscinetto 6311	1
6	9052	Corona conica Z=22	3
7	3430	Seeger E 55	1
8	9138	Ghiera M40x1.5 dx.	1
9	13882	Albero c.c.	1
10	9124	Distanziale x calotta	2
11	9139	Anello OR 2212	2
12	4138	Vite TE M14x30-9G	12
13	9111	Calotta	2
14	9134	Guarnizione	2
15	7481	Anello di ten. 70/100/10	2
16	13103	Cuscinetto 6311-2RS	2
17	12645	Albero comando aspe	2
18	9123	Distanziale x corona	2
19	3349	Cuscinetto 32210	2
20	13883	Distanziale L=508	2
21	3549	Vite TE M14x35-9G	54
22	9135	Guarnizione	6
23	12624	Scatola laterale	2
24	13886	Distanziale dx. L=308	1
25	9126	Scatola E.M.	1
26	13888	Distanziale sx. L=308	1
27	9301	Tappo sfiato Ø1"Gas	1
28	9179	Spia liv. olio Ø1"Gas	1
29	9707	Tappo Ø1"2"Gas	1
30	9133	Guarnizione x mozzo	1
31	9127	Mozzo E.M.	1
32	9053	Albero E.M.	1
33	7480	Anello di ten. 55/85/10	1
34	12657	Calotta completa	2
35	9142	Mozzo E.M. completo	1

## Main Drive T-269-008 Gearbox

Pos.	Part No.	Qty	Description
1	0.269.0701.00	1	SCATOLA T2
2	0.721.7103.00	1	TAPPO SFIATO TCST-12 1/2 GAS
3	8.1.1.00501	24	VITE TE UNI5739 M10X22 8,8
4	0.269.1301.00	2	COPERCHIO APERTO
5	8.0.9.00129	1	CUSC.RULLI CON. 30307
6	8.7.3.00003	2	ANEL.TEN.NORM. BA 35X62X10
7	0.269.3003.00	1	ALBERO PASS.CALET. 1 3/8"
8	0.259.7500.00	1	SPES.REG. 35.3x48.0
9	8.5.1.01084	1	ANEL.SIC.XALB.H=3 50 UNI7436
10	8.1.1.00343	2	VITE TE UNI5739 M8X14 8,8
11	0.269.1306.00	1	PROLUNGA AC
12	0.269.2002.00	1	ALBERO CALETTATO 1 3/8"
13	0.781.7102.00	1	DADO di REGISTRAZ. M50X1.5
14	8.7.3.01059	1	ANEL.TEN.LAB.P.BAUD3SL45X90X10
15	8.3.3.00384	2	ROS. RAME 8,4X14X1
16	8.0.9.00469	2	CUSC.RULLI CON. 30210
17	0.712.7500.00	1	SPES.REG. 50.3x70.3
18	0.269.6006.00	1	CORONA CONICA Z29 M6.9
19	8.0.9.00024	1	CUSC.RULLI CON. 30208
20	0.244.7500.00	1	SPES.REG. 40.3x51.5
21	8.6.5.00203	1	TAPPO CON.ESAG.EST. 1/2"GAS
22	0.262.5000.00	1	PIGNONE CONICO Z15 M6,9
23	0.244.7525.00	1	SPES.REG. 51.5x40.3x2.5



## *Fittings*

Part No.	Description	
MM/3605	Handbrake	
GP/001	Brake and indicator light	
GP/3505	Junction box	
GP/3503	7 Pin plug	

## *Wheel & Tyre Assembly*



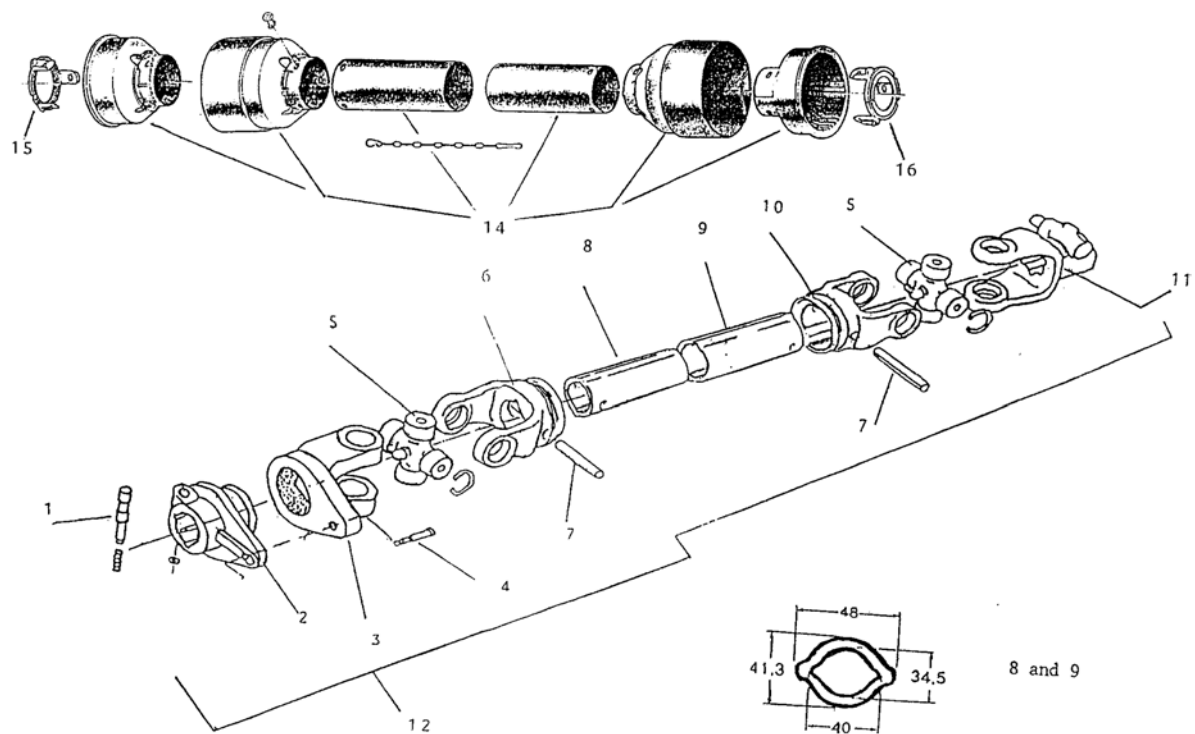
<i>Wheel size</i>	<b>570/80 R38</b>
<i>Tyre Only</i>	
<i>Wheel Assembly</i>	WHL/0041



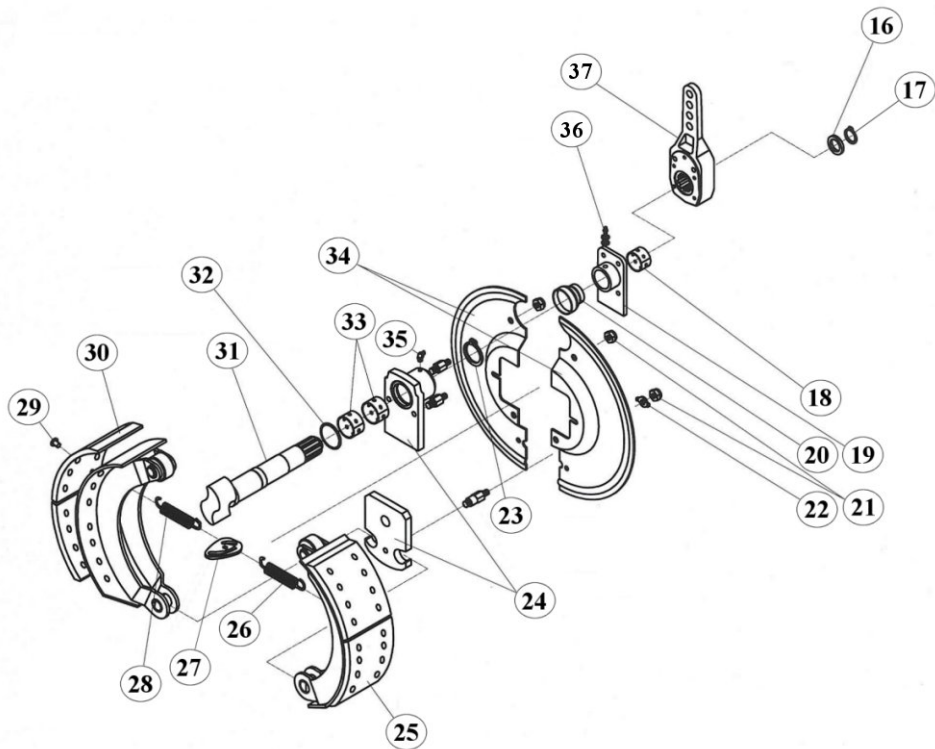
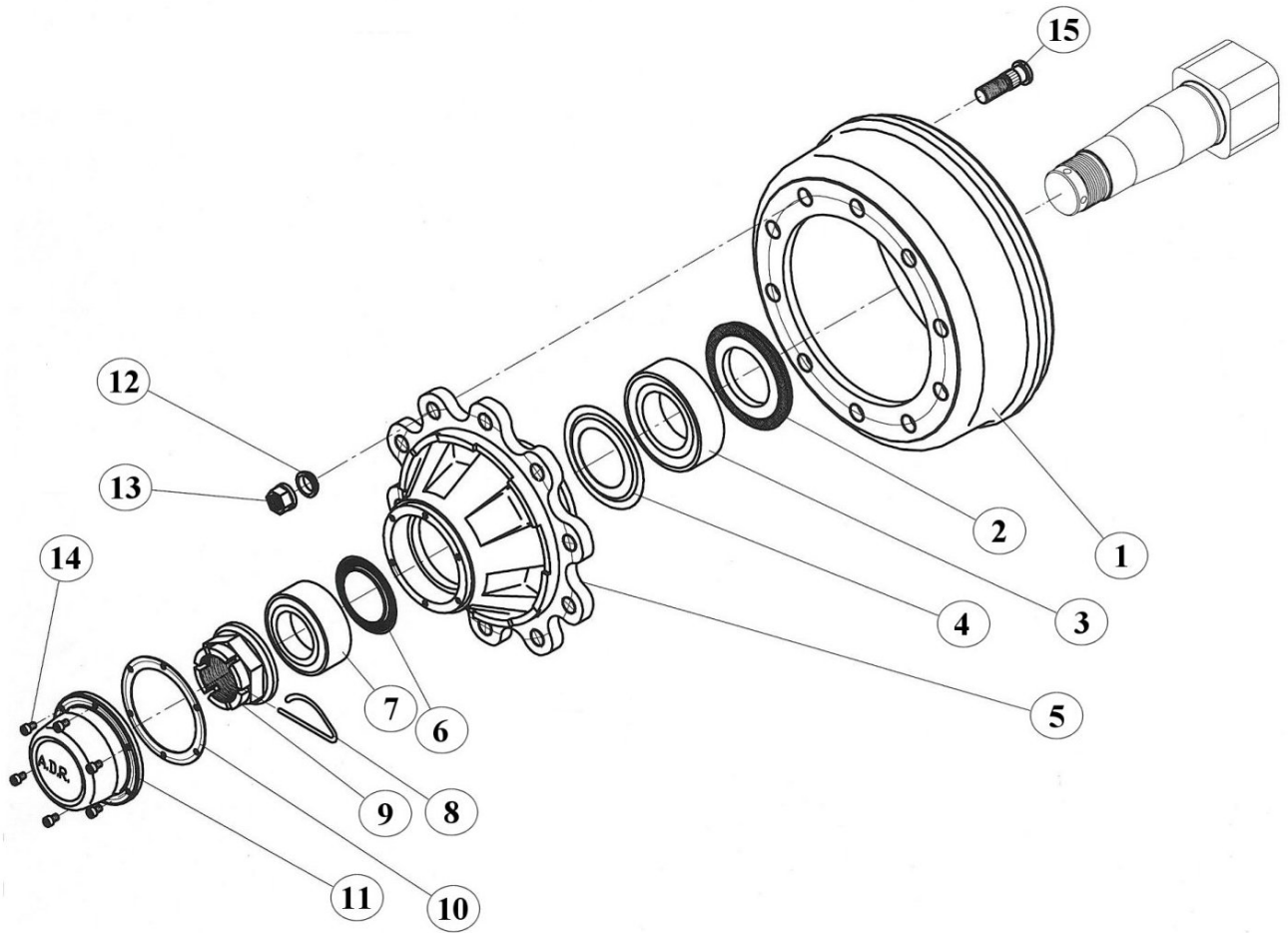
## PTO Shafts

	Part No.	Description
	DS/0006	Complete PTO shaft
<b>1</b>		Push pin
<b>2</b>		Shearpin hub (Splined)
<b>3</b>		Shearpin yoke hub
<b>4</b>		Shearbolt Shearbolt
<b>5</b>		Cross piece
<b>6</b>		Inner yoke
<b>7</b>		Roll pin
<b>8</b>		Tube Male section
<b>9</b>		Tube Female section
<b>10</b>		Outer yoke
<b>11</b>		End yoke
<b>14</b>		Covers for shaft
<b>15</b>		Retaining collar
<b>16</b>		Retaining collar

**Note: - Only use shearbolts supplied by Hi-Spec Engineering Ltd.**



# Axles



## *Axles*

Ref.	Description
1	Brake drum
2	Inner bearing seal
3	Inner bearing
4	Inner bearing dust cap
5	Hub
6	Outer bearing seal
7	Outer bearing
8	Split pin
9	Castle nut
10	Hub cap gasket
11	Hub cap
12	Tapered washer
13	Wheel nut
14	Hub cap bolt
15	Wheel stud
16	Cam lever washer
17	Cam lever circlip
18	Cam rod bush
19	Cam rod bracket
20	Cam rod seal
21	M10 nut
22	M10 washer
23	Cam rod circlip
24	Brake pivot
25	Brake shoes
26	Spring
27	Adjustor plate
28	Spring
29	Fixing rivet
30	Brake pad
31	Cam rod
32	Cam rod washer
33	Cam rod inner bushes
34	Back plate
35	Grease nipple
36	Outer grease nipple
37	Cam lever



## Sales and Service

### Ireland

#### Head office

Hi-Spec Engineering Ltd., Station Rd, Bagenalstown, Co. Carlow, Ireland

Tel: - +353 59 9721929 Fax: - +353 59 9721980

Email: - [sales@hispec.net](mailto:sales@hispec.net) or [info@hispec.net](mailto:info@hispec.net)

#### Sales

Contact: - Eoin Keane, Hi-Spec Engineering Ltd. Tel: - +353 87 2562963

Email: - [eoin@hispec.net](mailto:eoin@hispec.net)

#### Machine Servicing

Contact: - Michael Brennan, Hi-Spec Engineering Ltd. Tel: - +353 87 2403312

#### Spare Parts Store

Contact: Mike Nolan or Terence Byrne, Hi-Spec Engineering Ltd.

Tel: - +353 59 9721929 Fax: - +353 59 9721980

Email: - [stores@hispec.net](mailto:stores@hispec.net)

### U.K.

#### Sales

#### Wales & Southern England

Contact: - Edward Lewis, Hi-Spec Engineering Ltd. Tel: - +44 7876 452698

Email: - [elewis@hispec.net](mailto:elewis@hispec.net)

#### Scotland & Northern England

Contact: - Gordon Brodie, Hi-Spec Engineering Ltd. Tel: - +44 7799 905130

Email: - [gordon@hispec.net](mailto:gordon@hispec.net)

#### For spare parts

Contact: - Your local Hi-Spec dealer. If you require a contact name and number you can telephone head office and we would be glad to assist you.

