

## Double membrane gas storage with belt/net construction



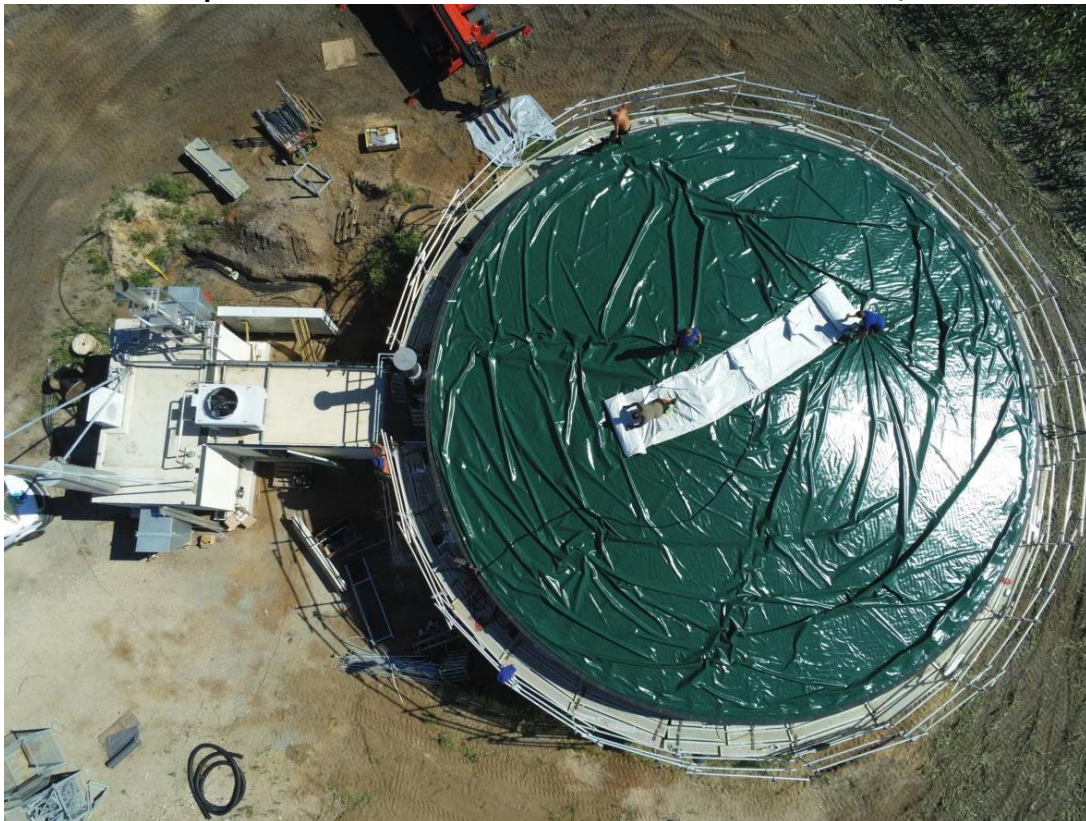
**Belts are tensioned over the center support towards the opposite rail**



**Screwed mounting rail  
Underlay net is attached and fastened**

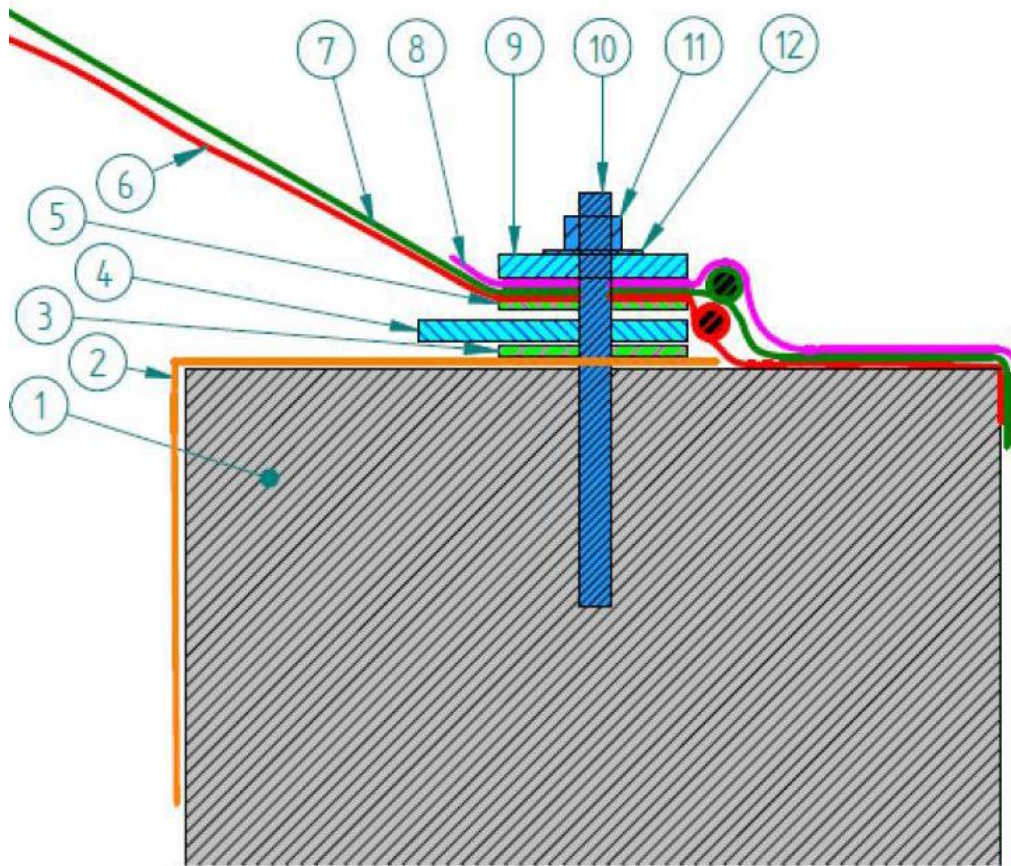


**Weather protection film is rolled out and attached to the rails/anchors**



**Gas storage foil is rolled out and fastened.  
Measurement is attached.**





Number	Description
1	Wall top
2	Wall top sealing (optional)
3	Sealant
4	Clamp rail incl. belt holder
5	Sealant
6	Gas Storage Foil PVC
7	Weather protection film PVC
8	Rain deflector
9	Top terminal rail
10	Anchor
11	Nut
12	Washer