



Biogas

# Pumps Agitators Accessories



Quality wins through – since 1887

**Made in Germany**





## Franz Eisele u. Söhne GmbH & Co. KG

Since the founding in 1887 the Eisele company has been family-run, now in the 4th and 5th generation by Bernhard and Dominik Eisele. The many years of successful company development is based on a simple philosophy:

### **Quality wins through.**

Conscious of the fact, that only products that meet the toughest demands will prevail over the long term, highest quality was a basic principle and minimum requirement right from the start in the development and manufacture of the multiple award-winning new developments of the company founder, Franz Eisele. The product developments were driven forward by the successive generations, performances continually increased and new markets developed.

It is the enthusiasm and the desire for perfection, combined with a large portion of heart and soul, which first makes these advances possible.

The secret of the great success of Eisele is the cohesion of the workforce. Everyone pulls together in one direction, every employee is an important element and contributes significantly towards the general appreciation of the brand.

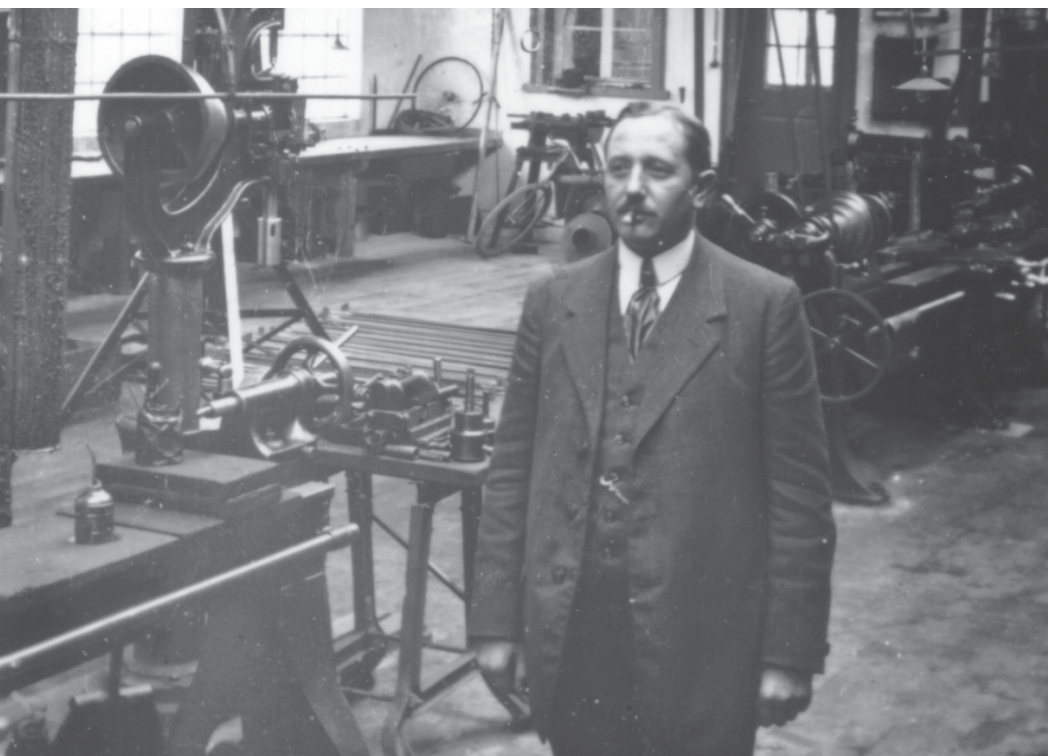
In the areas of agriculture, biogas and industry, Eisele supplies customers throughout the world and delights with quality and reliability

### **Made in Germany.**

At Eisele greatest value is placed on consultation and service. Only through precise examination of the individual preconditions and requirements at the customer's premises can an optimal coordination of the product configuration be created, that ensures an efficient workflow. The many years of experience of Eisele and the competence of the employees are the most important pillars and the basis for this.

In order to be able to improve the products even further, a test centre is currently under construction, in which additional findings can be gained through practice-oriented trials. Typical for Eisele, one is not content which that which has already been achieved and constantly drives the development forward. Work processes and sequences are continuously optimised through exchange and dialogue with the employees. Revenue gains are reinvested in the latest technology. Despite the long tradition, the view is firmly focussed on the future, with one single objective:

### **To delight the customer with an Eisele product.**



Quality wins through – since 1887

**Made in Germany**





## Table of Contents



**Overview of Biogas Components** 06 - 07

### **Pumps**

Submersible motor pumps 08 - 11

Rotary pumps 12 - 15

Vertical pumps 16 - 19

Vertical – compact system 20 - 21

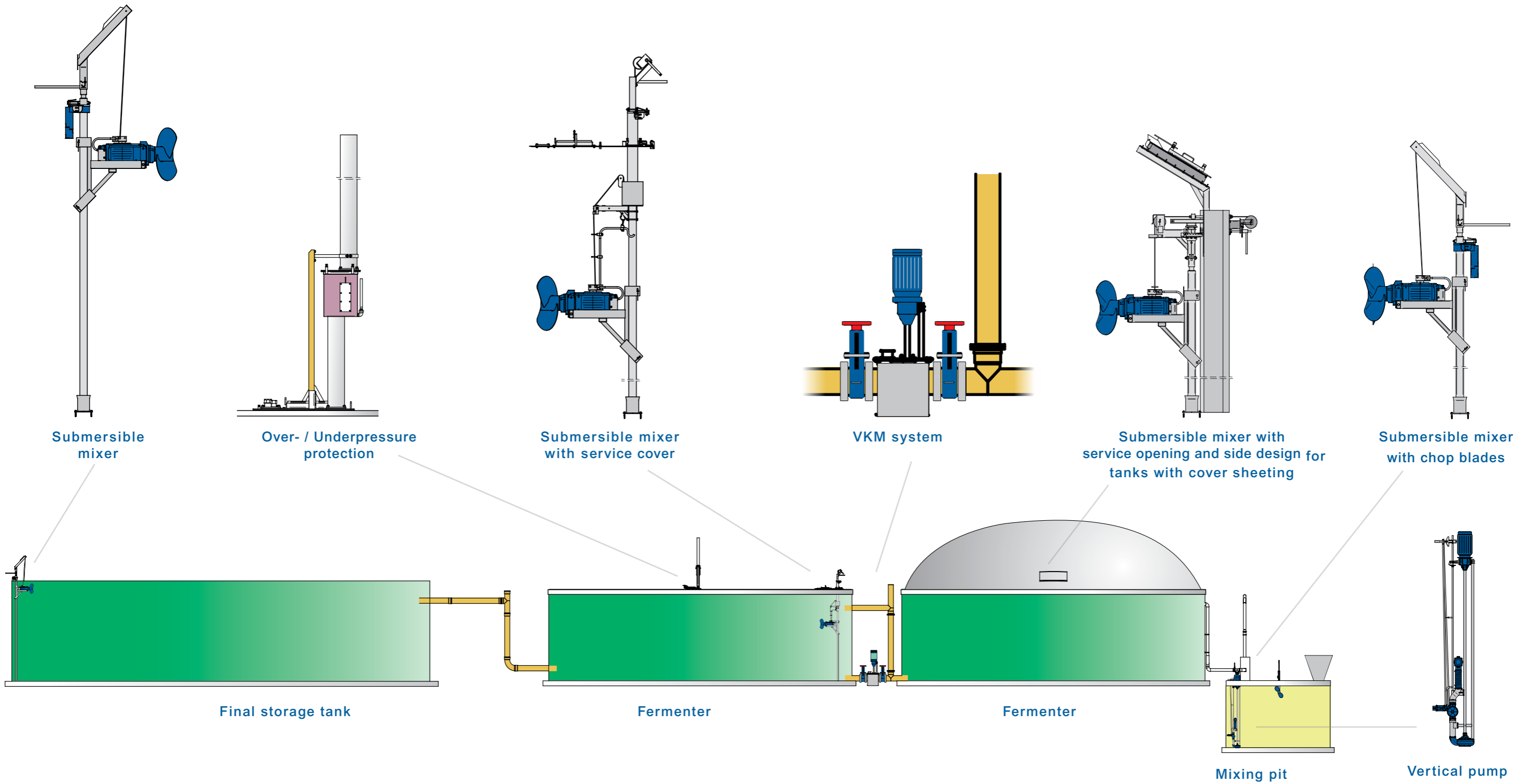
**Drum filling station** 22 - 25

### **Agitators**

Submersible mixers 26 - 31



# Overview of Biogas Components





Compact, powerful and already tried and tested thousands of times under the toughest operating conditions: The AT submersible motor pumps.

The Eisele classic stands out with high efficiency and user-friendliness due to simple handling.

The AT series can be operated mobile or stationary, dry or wet.

**Power range:** from 3.0 kW to 22.0 kW

**Delivery rate:** from 2300 l/min to 6700 l/min





# Submersible motor pumps



AT 44-F / AT 54-F  
Illustration with pedestal



AT 64-O / AT 84-O  
AT 74-O / AT 104-O  
AT 74-S / AT 104-S  
Illustration with pedestal



AT 154-S  
Illustration      AT 204-S  
with stand



AT 254-S / AT 304-S  
Illustration with bottom track

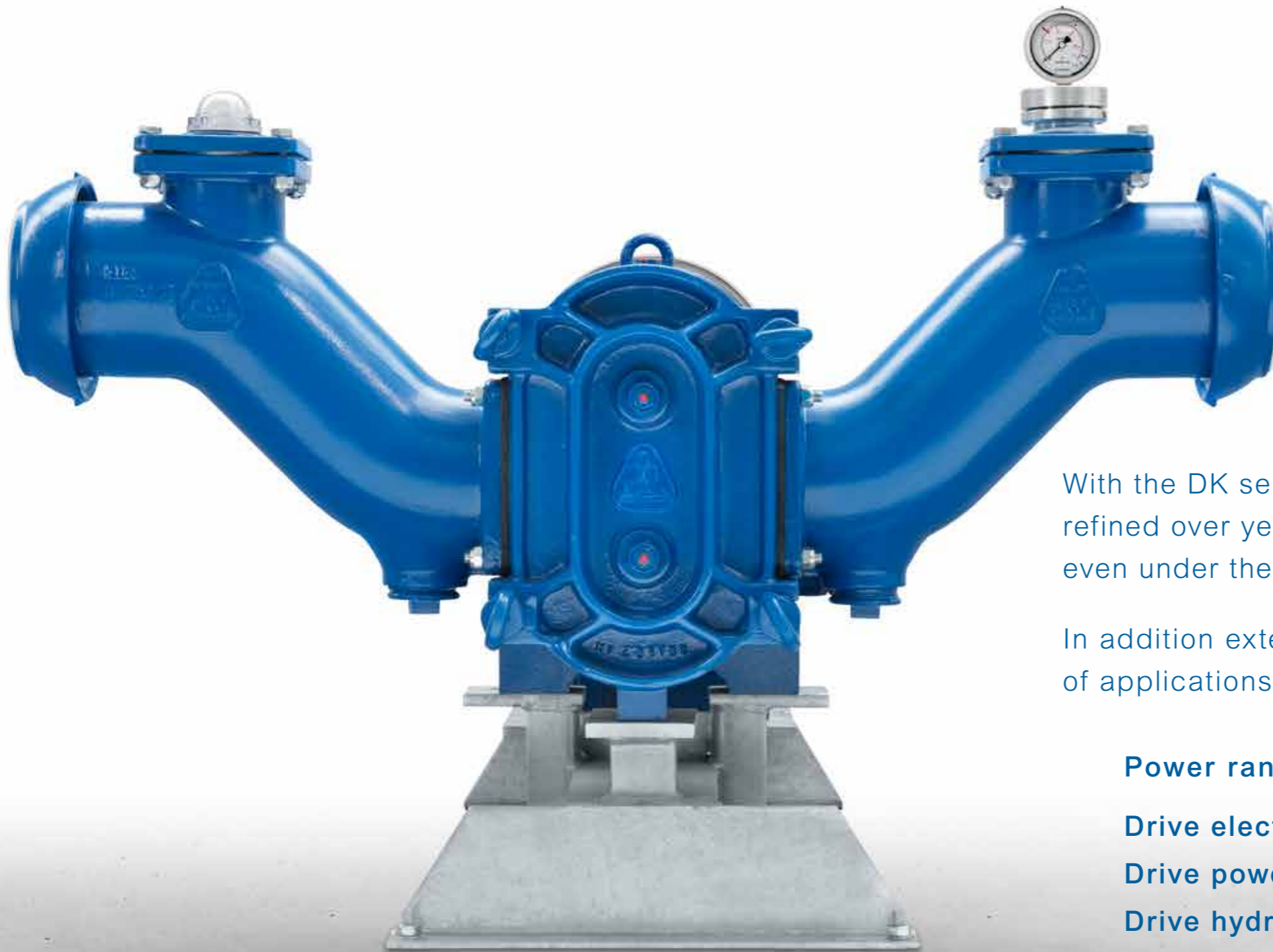
compact

powerful

reliable

effective





With the DK series, Eisele presents an all-round talent refined over years, that deals effortlessly with all tasks, even under the most adverse conditions.

In addition extensive accessories expand the wide range of applications and leave nothing to be desired.

**Power range:**

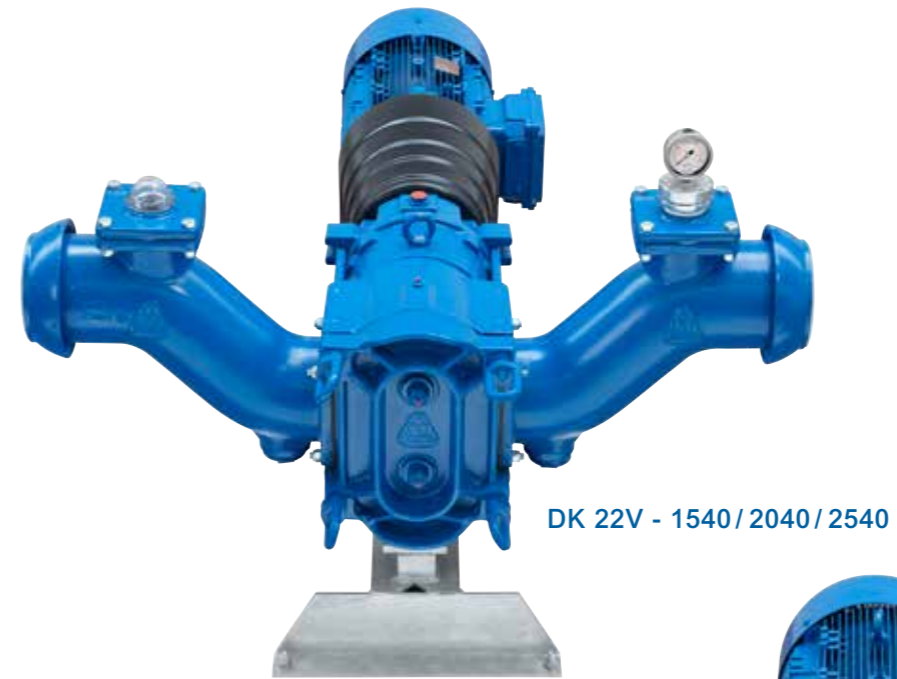
**Drive electric:** from 5.5 kW to 30.0 kW

**Drive power-take-off shaft:** from 1500 l/min to 6000 l/min

**Drive hydraulic:** optional

**Delivery rate:** from 475 l/min to 5700 l/min









The Eisele Vertical pumps have impressively proven their top quality over many years of operation under extreme conditions.

The tireless marvels master the most difficult tasks with ease, delight through reliability, agitate and deliver up to 12000 l/min.

**Power range:** from 3900 l/min to 12000 l/min

**Drive types:** Three-phase motor or power-take-off shaft

**Structural heights:** from 1.5 m to 7.5 m





VGU 41



VG 41



VG 42



VMU 41

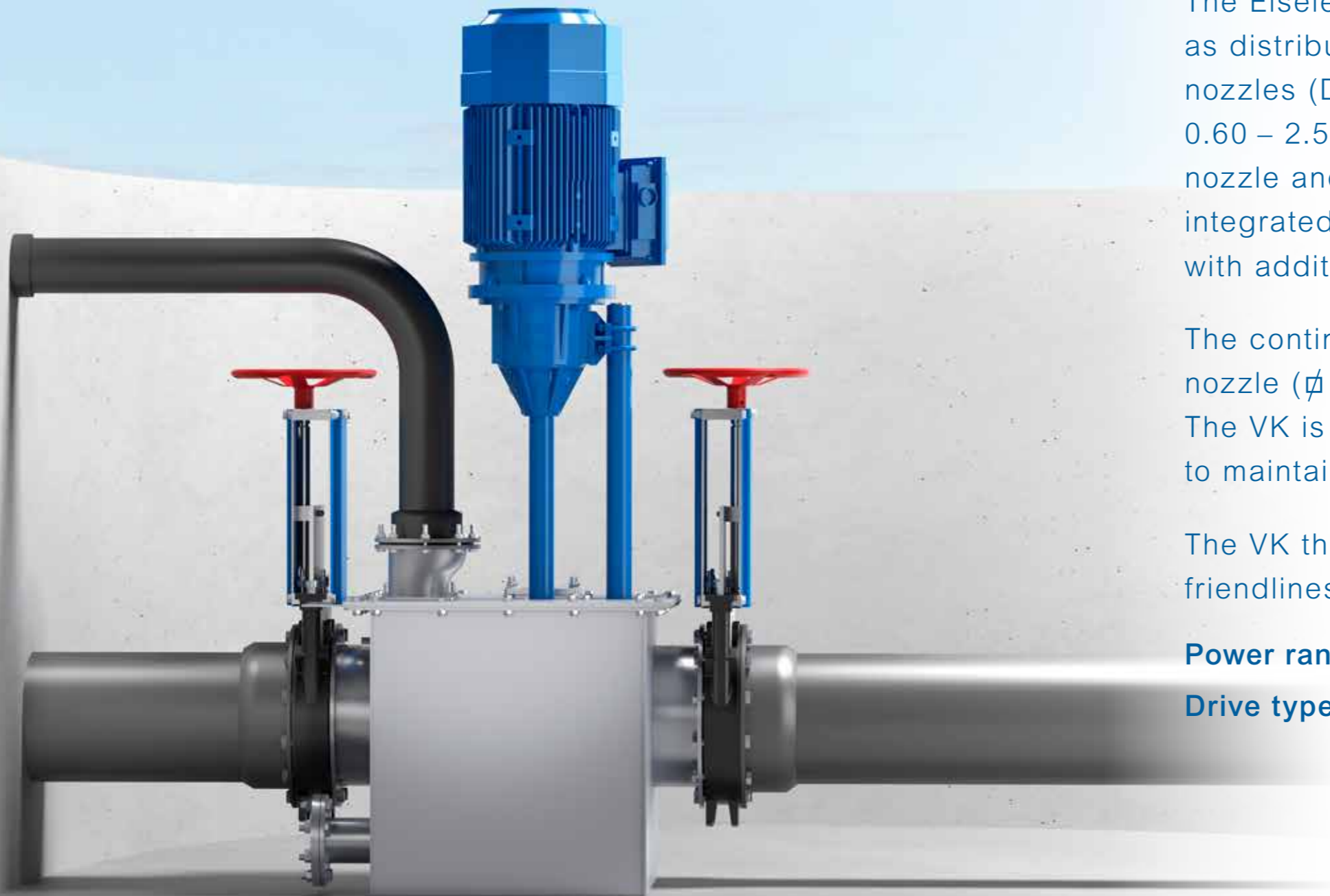


VM 41



VM 42





The Eisele Vertical Compact system VK can be designed as distributor pumping station with up to four connection nozzles (DN 300) and an overall pump length of 0.60 – 2.50 m. The vertical pump equipped with inlet nozzle and propeller blade including hard faced welding is integrated safe dry running in a stainless steel container, with additional gas venting and drainage system.

The continuing pressure line can be flanged to the outlet nozzle ( $\varnothing$  180 mm).

The VK is quickly assembled, simple to operate and easy to maintain.

The VK thanks the combination of reliability with user-friendliness for its outstanding position.

**Power range:** from 3900 l/min to 12000 l/min

**Drive types:** Three-phase motor or transmission



The modular design of the Eisele drum filling station enables the flexible adaptation to the respective requirements at the customer's premises.

Whether as simple basic version, as rotating variant, or also as height-adjustable version – with the modular construction system an optimum device configuration can be assembled for every requirement.

Due to the variety of combinable modules, an individual drum filling station can be configured, adapted to the respective customer requirements.

The hydraulic height adjustment can be controlled per hand operated pump, or with a pump unit (optional with radio remote control). Drum trolleys can also be pressure filled with a docking funnel.

In combination with the Eisele high-performance pumps, your drum filling station becomes a perfect unit.

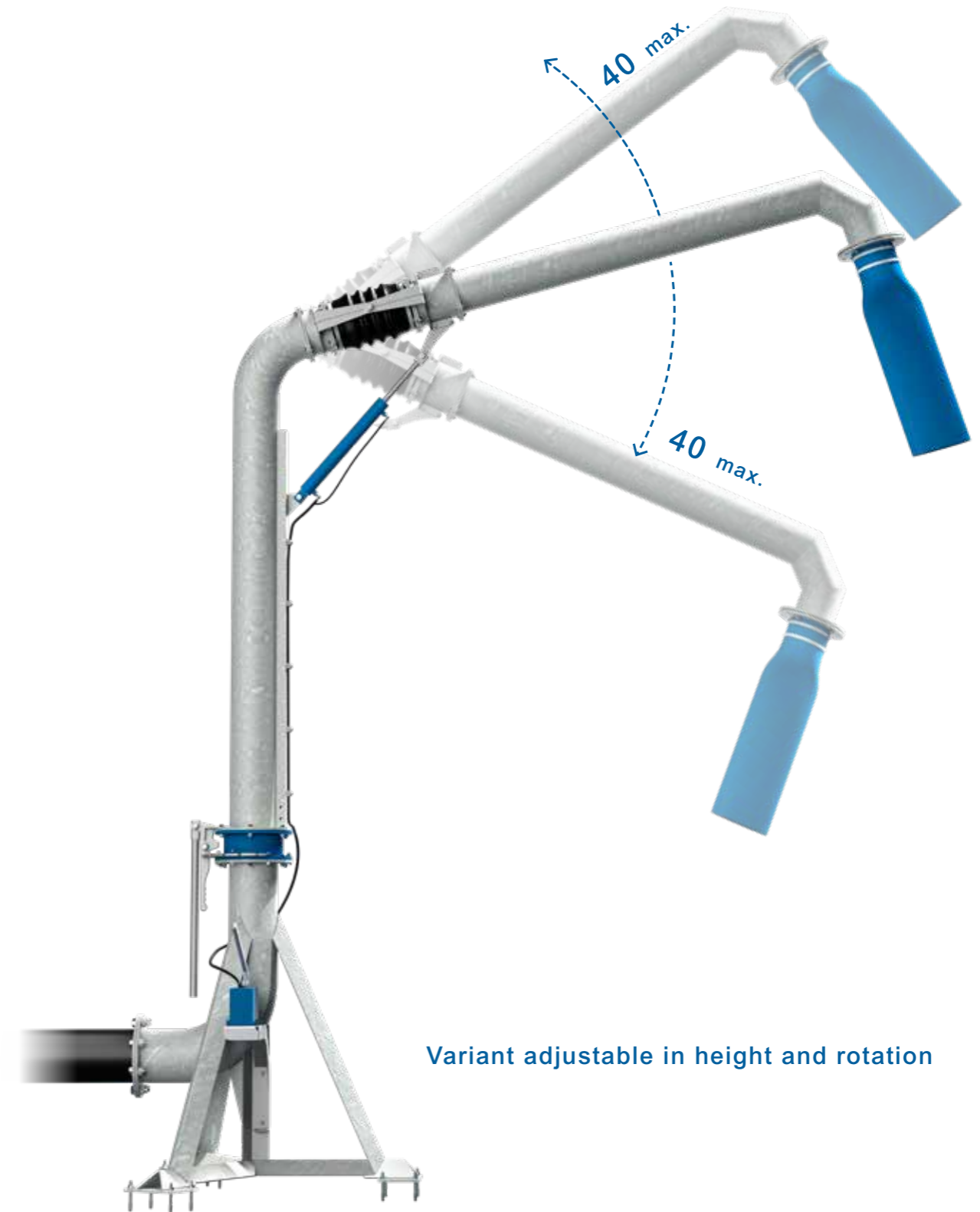
### **Design variants:**

rigid, can be rotated, height-adjustable, adjustable in height and rotation





Basic version



Variant adjustable in height and rotation



With the GTWSB / GTWSI-EX submersible mixers, Eisele combines power with safety without compromise.

The water pressure-tight agitators impressively demonstrate their strength in continuous operation. Even viscous media are powerfully agitated by the dynamic two-wing wide-blade propeller, ensuring thorough homogeneous mixing of the substrate.

With the **Service Cover** and the **Service Opening with side actuation**, Eisele offers two refined solutions for the operation and maintenance of the agitators.

#### **Service Cover:**

The service cover is used on tanks with concrete top cover. This way the agitator can be maintained simply and easily from outside.

#### **Power range GTWSI-EX:**

7.5 kW, 11.0 kW and 15.0 kW



#### **Power range GTWSB:**

7.5 kW, 11.0 kW, 15 kW, 18.5 kW and 22.0 kW





The GTWSI - EX agitator is designed for maximum safety and is therefore the first choice in the EX-protection zones 1 and 2.

With the safety systems on the GTWSI - EX agitator, Eisele guarantees protection from explosion of flammable gases in the environment.

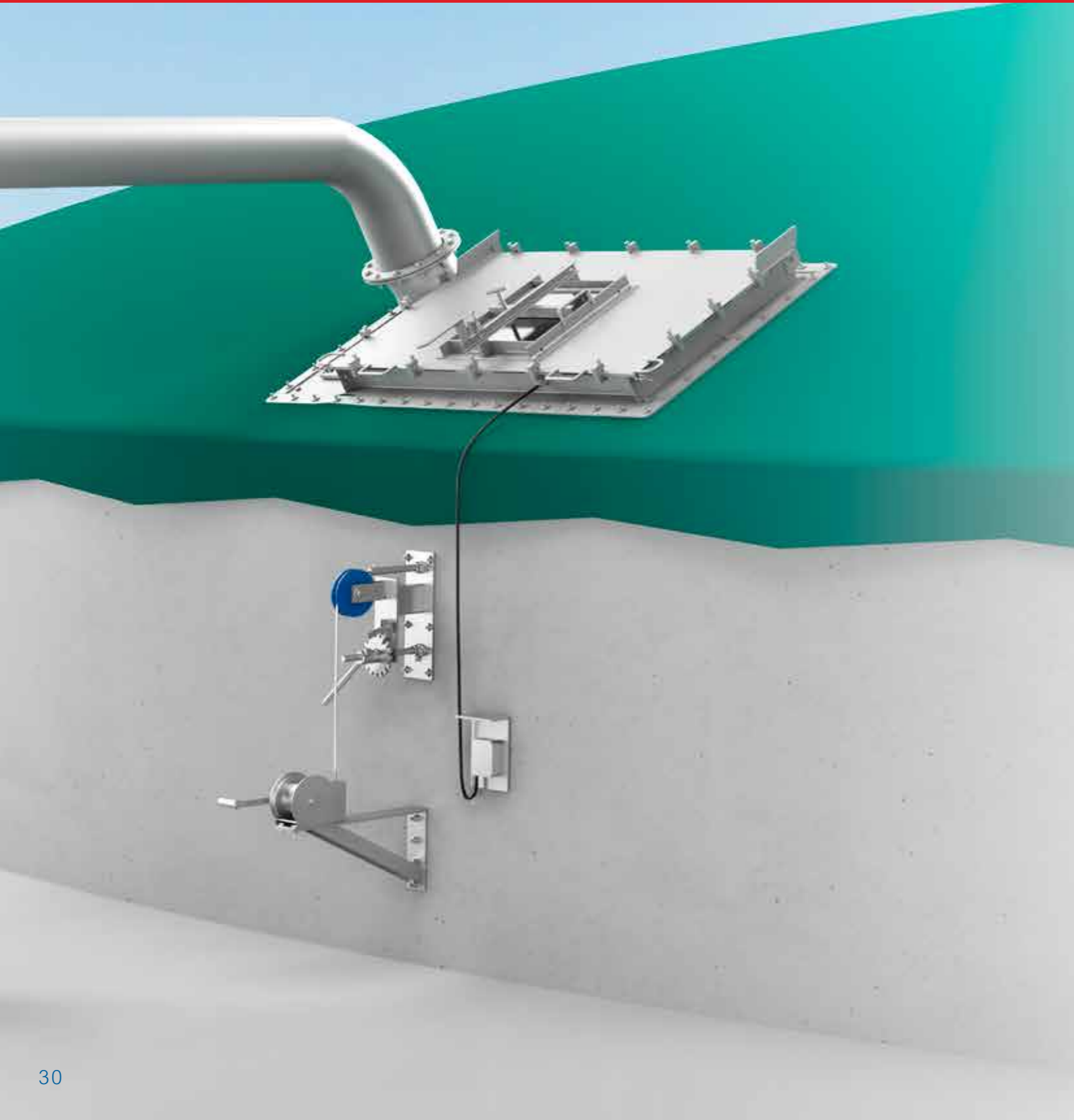
Based on the experience, care and competence, customers throughout the world trust the Eisele EX agitators for use in environments with increased danger zones, such as e.g. fermenters and tanks with alternating filling levels.

#### **Service Opening:**

The service opening enables easy access for the basic maintenance of the device. Loss of gas due to laborious opening of the complete roof is avoided.

Due to the built-in inspection glass, the fermentation processes in the tank can be checked at any time with a brief glance.





**Service opening with side actuation:**

For tanks with plastic cover sheeting the agitators are provided with service opening and side actuation.

On the outside of the tank the side actuation enables horizontal swivelling of the agitator and by means of a cable winch the immersion depth can be changed quickly and simply.

The user-friendly simple handling combined with service comfort based on high-quality materials make this product solution a powerful component in your biogas plant.







Franz Eisele u. Söhne GmbH & Co. KG



Hauptstr. 2-4  
72488 Sigmaringen

Tel.: +49(0)7571/109-0  
Fax: +49(0)7571/109-88

info@eisele.de  
www.eisele.de

Quality wins through – since 1887

**Made in Germany**

